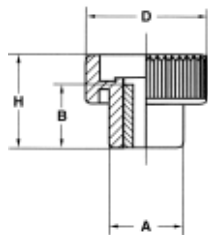


## Plastic Knurled Nuts



- Glass-fiber body
- Through hole design
- Bushing available in brass or stainless steel

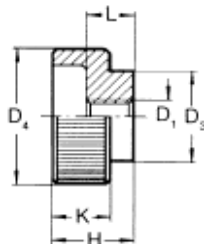
### INCH

Brass Insert PART #	Thread	D	A	B	H
KN-224	#10-24	0.79	0.47	0.43	0.51
KN-225	1/4-20	0.98	0.59	0.55	0.75
KN-231	5/16-18	1.18	0.71	0.55	0.83
KN-237	3/8-16	1.38	0.83	0.67	1.1

### METRIC

Stainless Steel Insert PART #	Brass Insert PART #	Thread	D	A	B	H
KN-205SS	KN-205	M5 x .8	20mm	12mm	11mm	13mm
KN-206SS	KN-206	M6 x 1.0	25	15	14	19
KN-208SS	KN-208	M8 x 1.25	30	18	14	21
KN-210SS	KN-210	M10 x 1.5	35	21	17	28

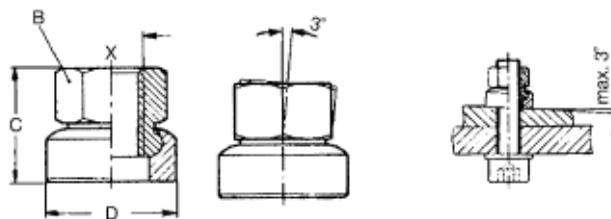
## Metric Knurled Nuts



- Available in carbon steel with black oxide finish and stainless steel
- Straight knurl finish
- Full thread
- Dimensions shown in millimeters

Steel PART #	Stainless Steel PART #	Thread	D1	D3	D4	h	k	l
KN-105	KN-105SS	M5 x .8	14mm	20mm	12mm	8mm	7mm	
KN-106	KN-106SS	M6 x 1.0	16	24	14	10	8	
KN-108	KN-108SS	M8 x 1.25	20	30	17	12	10	
KN-110	KN-110SS	M10 x 1.5	28	36	20	14	12	

## Collar Nuts with spherical seat



- Carbon steel, black oxide finish
- Metric sizes only

PART #	X Thread	B	C	D
SN-108	M8 x 1.25	13mm	14mm	17mm
SN-110	M10 x 1.5	16	17.5	21
SN-112	M12 x 1.75	18	21.5	24
SN-116	M16 x 2.0	24	28	30
SN-120	M20 x 2.5	30	35	36
SN-124	M24 x 3.0	36	42.5	44